

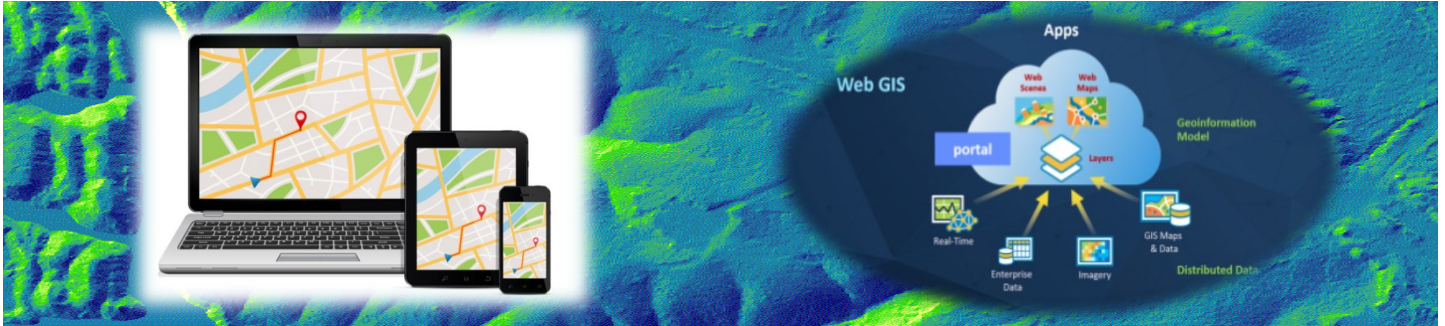
June 2020

Information Technology Services (ITS)

Enterprise GIS Division E-Newsletter



EGIS Division Mission: "To provide quality geospatial services, data and technology solutions, empowering the government agencies and citizens of Jefferson County to make service-driven decisions."



What's New In County GIS? | ESRI UC 2020 | Map of the Month

What's New in County GIS?

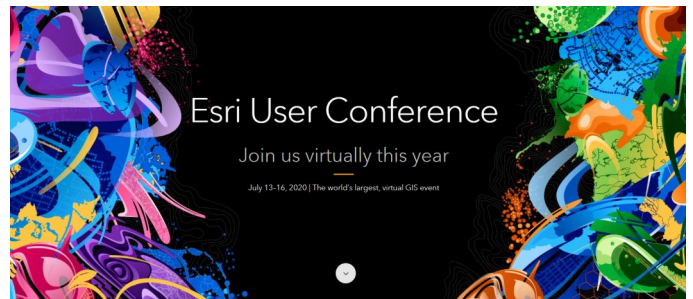
- JC GIS Addressing Workgroup (DDS, R&T, ITS) is working with JC 911, Birmingham 911 and cities to prepare data for county-wide ESRI Addressing Solution
- JC GIS Consortium received pilot area G-Squared Orthophotography for 2020 aerial survey. EGIS reviews data and works with G-Squared to ensure imagery meets expectations
- Schoel Engineering has delivered the Jefferson County pilot area surveyed section corners required for TA Tax Maps migration project.
- JC EGIS has engaged in an Advantage Program with ESRI that provides us with organizational support on several levels including [access to free training](#) through ESRI Academy.

ESRI User Conference — July 13-16, 2020

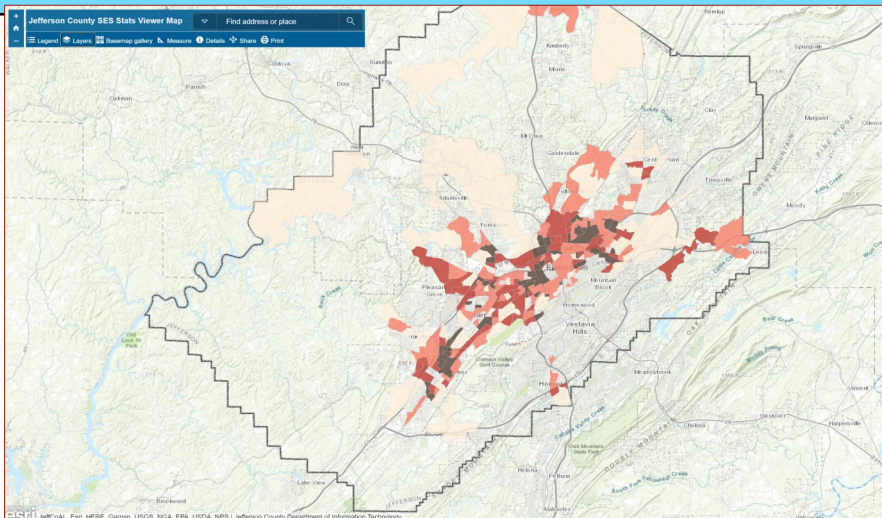
This year because of the COVID-19 pandemic ESRI has changed the Annual User Conference to a 100% online format.

ESRI have also made it 100% free to attend!

[Click here](#) to learn more or register for the event!



Map of the Month: Socioeconomic (SES) Metrics in Jefferson County



This app was developed for use by the Department of Community Services and Workforce Development. The purpose is to conduct both background research into the SES and demographic characteristics of Jefferson County, and also to display that information in a visual context. This helps to facilitate decision making that will benefit the citizens of Jefferson County,

Links: [Jefferson County](#) | [What is GIS](#) | [GIS Apps Page](#) | [Open Data Page](#)

Contact Us: gisdata@jccal.org | 205-325-5301